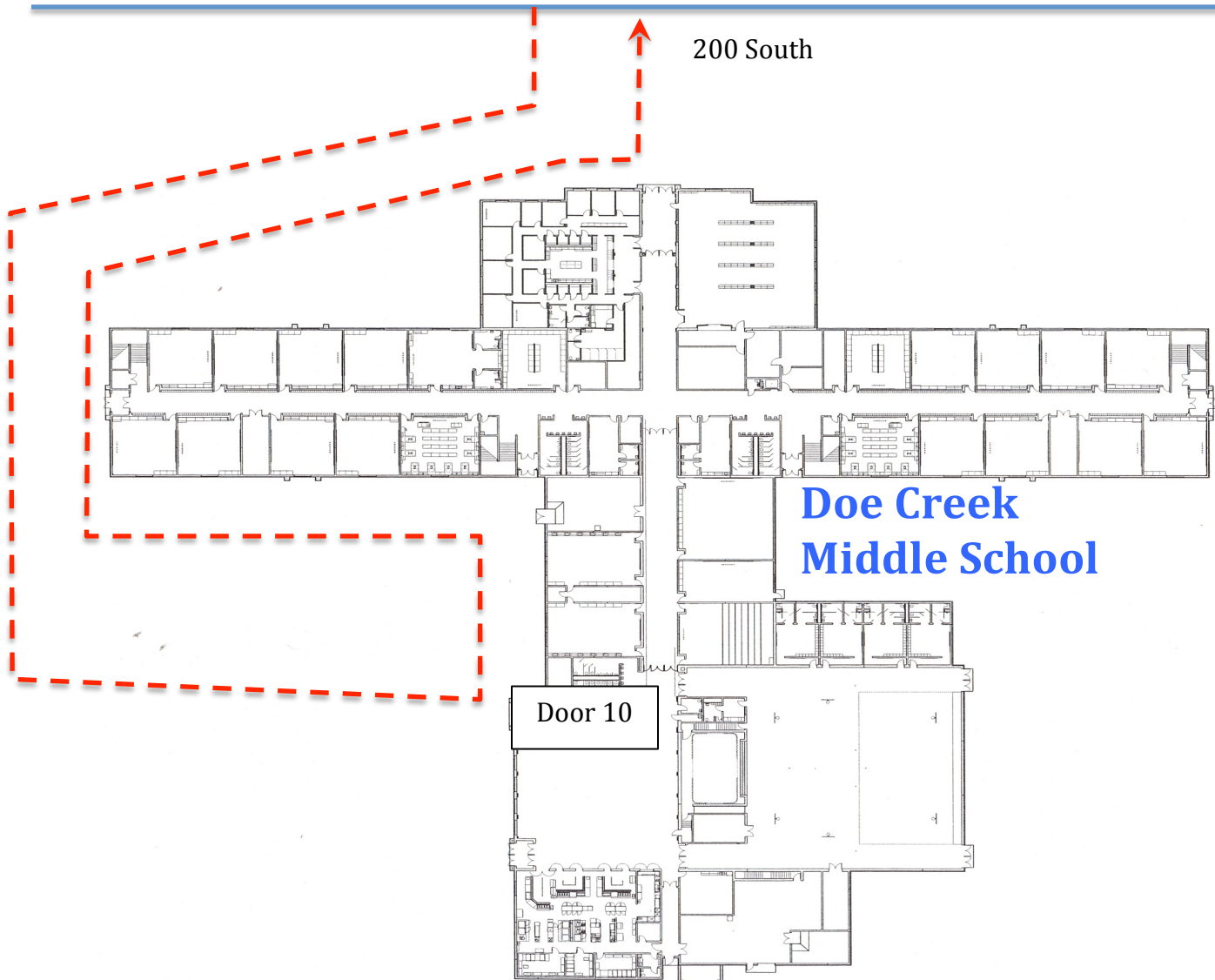


DCMS Drop Off/ Pick Up Procedure



Parents dropping their students off at Doe Creek Middle School in the morning or picking them up after school should enter the drive off of 200 South that wraps around the west side of the building. Parents should follow the signs and turn left into the parent drop off loop that leads to door #10. After drop off or pick up, parents should turn right so that they exit on 200 South. The access road that leads to the old Doe Creek lot is reserved for buses only during drop off and pick up time. This ensures the safety of our student bus riders and allows for the buses to get to school on time. Thank you for observing this procedure. We appreciate your commitment to keeping our students safe!